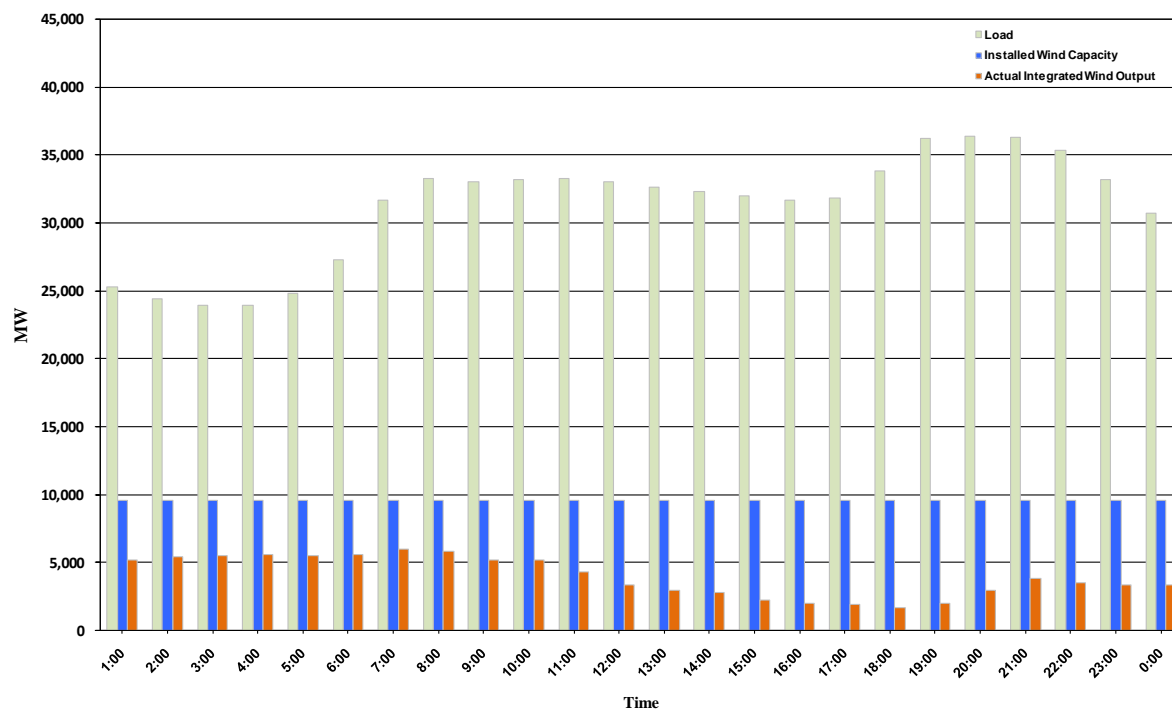




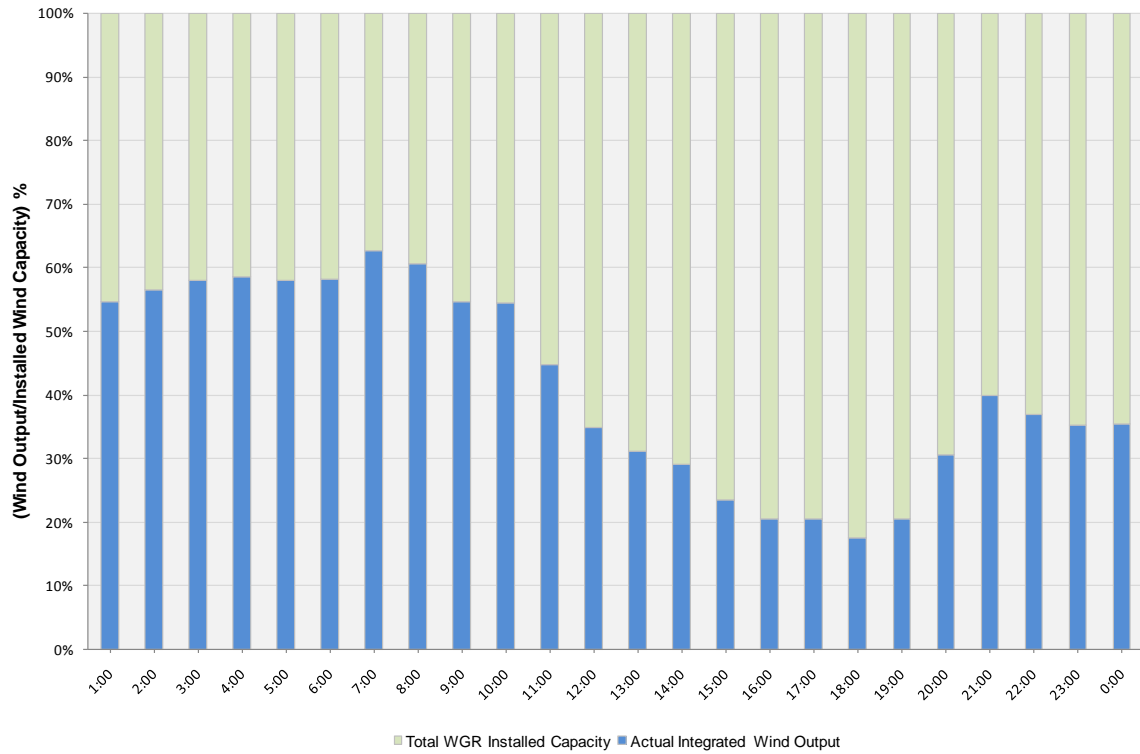
## ERCOT Grid Operations Wind Integration Report: 12/16/10

Peak Load	36,377 MW
Load Peak Hour	20
Wind Record 12/11/10	7,227 MW
Max Wind Value	6,220 MW
Wind Peak Hour	06:52:00
Wind Integration %	18.82

Hourly Average Actual Load vs. Actual Wind Output  
12-16-2010



**Actual Wind Output as a Percentage of the Total Installed Wind Capacity**  
12-16-2010



**Actual Wind Output as a Percentage of the ERCOT Load**  
12-16-2010

